

Congratulations on your new S-Wave Curtains from Wonderlux!

You're just a few minutes away from getting them installed. We've tried our best to ensure that your curtain pack is straightforward and uncomplicated, so you'll be enjoying your new curtains in no time.

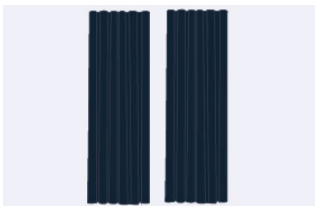
Remember: The way you install your curtains will depend on the type of surface you're drilling into. If you need a bit of helping figuring it out, get in touch with us before you start.

- Drilling into **wood**? Follow the steps exactly as they're laid out below.
- Drilling into **plaster**? Use the stud finder to locate the studs or joists in your wall. Then, you're free to follow the steps below as normal.
- Drilling into **concrete, stone, or brick**? You're all good to follow the steps as they're laid out below, but remember to use a Masonry drill bit and the appropriate anchors and screws.

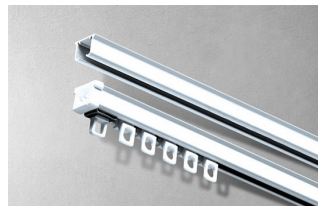
Stuff You'll Need:

- Pen
- Tape measure
- A small cordless drill
- A Phillips head screwdriver
- A stud finder
- Eye protection
- A friend to help you
- 8. 5-10 minutes

Your Curtain Pack:



Curtain panels



Curtain Track and S-Fold Runners
(At the specific length ordered)



Curtain Track Joiner
(If your curtain track is longer than standard)



Brackets
(For A Face Fix)



Brackets
(For A Top Fix)

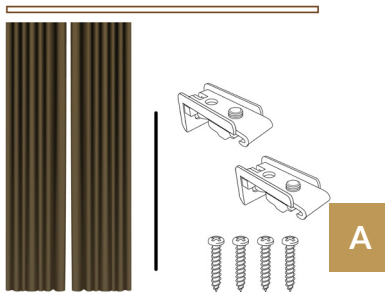


Screws with or without plugs depending on mounting surface

Installation:

Right - time to get down to business. Let's take it slow.

Face Fix - Onto Your Wall



A. Set out your gear:

Unpack your curtain pack onto a flat surface where you can easily find each component.



B. Place your track next to the window to make sure that it's the correct width. If you've got 2 or more pieces of track, lay your track joiners on the floor and slot the ends of the two tracks into it so that they click together in the middle.

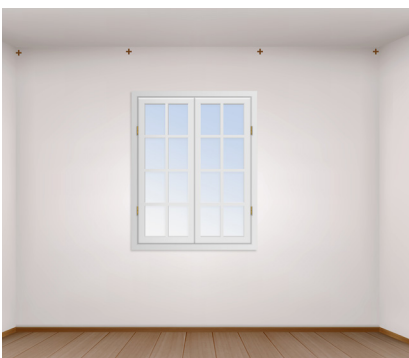


C. Take your brackets and space them out evenly, roughly 600mm apart. Keep in mind that the brackets at each end of the track should be no further than 150mm in from each end.

Joining your split track



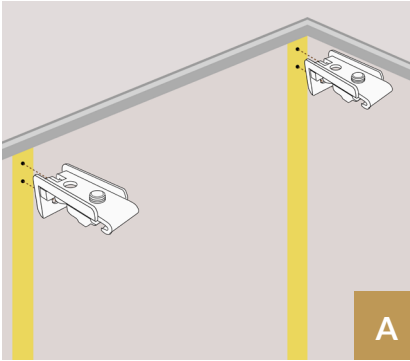
1. Find your wall studs:



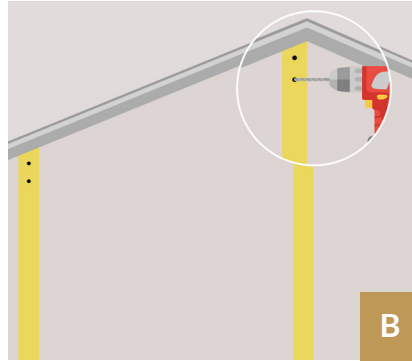
Your brackets are going to screw into your wall studs, but we've gotta find them first. Slide your stud finder along the wall, and make a pencil mark on each stud as you locate them. Make sure you mark the spot at the height you want your curtains to hang from. If you need to, you can check back to the original height measurement you took.

- Screwing into concrete, stone, or brick? Don't worry about studs - head directly to the next step to start screwing in your brackets.

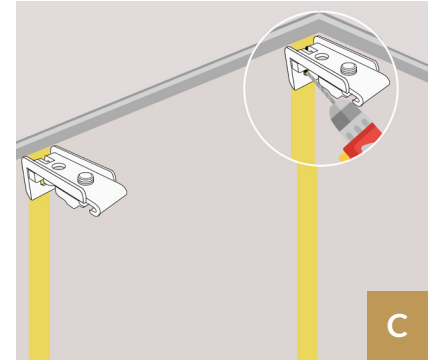
2. Install your brackets:



A. Line up each bracket with the pencil marks you made on your wall studs. Draw a little circle in the hole of the bracket that you're going to screw through.

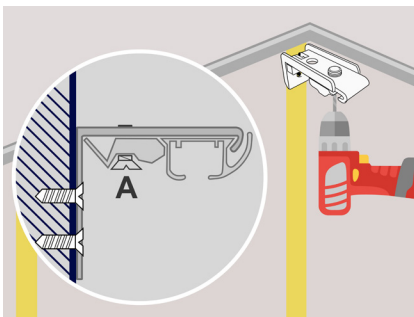


B. Pull on your safety goggles and fire up the cordless drill. Use short bursts to make a pilot hole - once you start seeing wood shavings, you'll know that you're drilling into the stud.

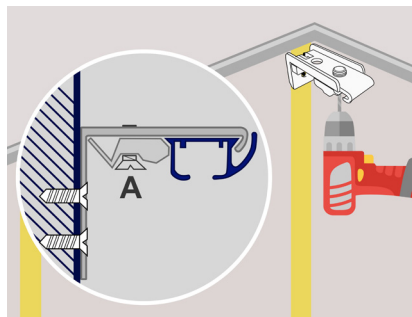


C. Using a screwdriver or the drill - whichever you're more comfortable with - screw your brackets into the wall with the screws provided. It can help to tighten them up with the drill once they're in.

3. Install your curtain track:



See how there's a screw in the part of the bracket that protrudes out away from the wall? Loosen this screw for each bracket.



Hold up your joined curtain track and line it up with each bracket. Click it into place, and re-tighten those screws you loosened in the last step. Make sure that the track is stable, all the brackets are tight and there are no wobbles.

4. Install your curtains:



Take a look at the top end of your curtain panels. They should have little hooks or pendants spaced equally along the fabric.



Hold up the curtain fabric and click/hook each pendant into the S-Fold runners on the curtain track.

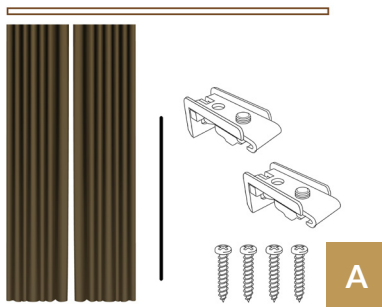
5. Make your S-Wave:



Time to give your curtains perfect S-Folds! Your fabric is structured, meaning it will hold its shape and you only have to dress the curtain once. Start at the top, and make sure that the heading curves around each bracket in the shape of an S.

Then, you can work downwards, moving sideways across the curtain, gathering the folds to make sure that each S-Fold carries through once the curtains are drawn open.

Top Fix - Onto Your Ceiling



A. Set out your gear:

Unpack your curtain pack onto a flat surface where you can easily find each component.



B. Place your track next to the window to make sure that it's the correct width. If you've got 2 or more pieces of track, lay your track joiners on the floor and slot the ends of the two tracks into it so that they click together in the middle.



C. Take your brackets and space them out evenly, roughly 600mm apart.

Joining your split track



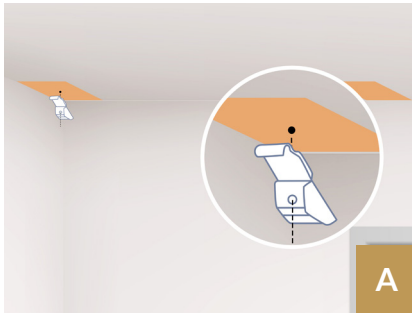
1. Find your ceiling joists:



Your brackets are going to screw into your ceiling joists, but we've gotta find them first. Slide your stud finder along the ceiling, and make a pencil mark on each joist as you locate them. It's best to make sure that each mark is at least 35mm out from the wall - that way, you're gonna have space to clear any window frames or roller blinds that might be sticking out. Keep in mind that these marks will line up with the back - rather than the front - of each curtain bracket.

- Screwing into concrete, stone, or brick? Don't worry about joists - head directly to the next step to start screwing in your brackets.

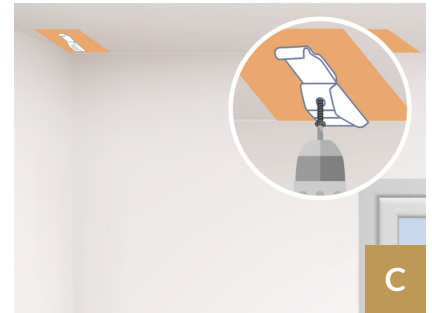
2. Install your brackets:



A. Line up each bracket with the pencil marks you made on your ceiling joists. Draw a little circle in the hole of the bracket that you're going to screw through.

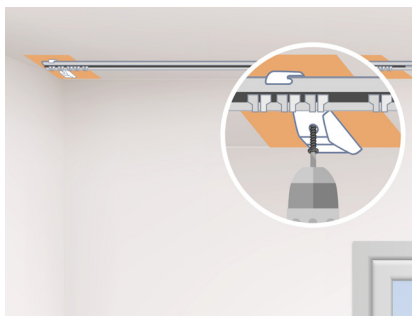


B. Pull on your safety goggles and fire up the cordless drill. Use short bursts to make a pilot hole - once you start seeing wood shavings, you'll know that you're drilling into the joist.



C. Using a screwdriver or the drill - whichever you're more comfortable with - screw your brackets into the wall with the screws provided. Don't make them too tight just yet - we want to click in the track before doing that.

3. Fix your track:



Hold up your joined curtain track and line it up with each bracket. Click it into place, and re-tighten those screws you left loose in the last step. Make sure that the track is stable, all the brackets are tight and there are no wobbles.



Take a look at the top end of your curtain panels. They should have little hooks or pendants spaced equally along the fabric.



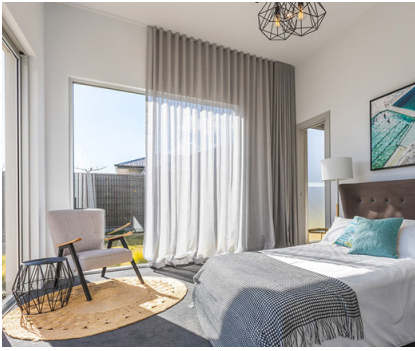
Hold up the curtain fabric and click/hook each pendant into the S-Fold runners on the curtain track.

5. Make Your S-Wave:



Time to give your curtains perfect S-Folds! Your fabric is structured, meaning it will hold its shape and you only have to dress the curtain once. Start at the top, and make sure that the heading curves around each bracket in the shape of an S.

Then, you can work downwards, moving sideways across the curtain, gathering the folds to make sure that each S-Fold carries through once the curtains are drawn open.



Mission complete! And all on your own, too!

Now it's time to sit back and admire your handiwork. Get ready to make some quality memories in your stylish new living space!

Troubleshooting/Hints & Tips

My S-Fold won't stay put!

All good, we can fix that. Draw the curtains open as wide as they can go. Starting at the top - you may need a ladder - use your fingers to gather S-Folds around the head of the curtain bracket. Move your way across, and then leave the curtains open for a couple of hours afterwards so that the fabric can get used to the new folds.

My curtains are getting stuck!

This is most likely an issue with the curtain track mechanism. Open your curtains as wide as they can go, and apply a thin layer of silicon spray to the tracks where the curtain pendants slide. That should help them move more smoothly!

How do I clean my curtain?

This depends on the fabric of your curtain. Every fabric is different, so check the label for specific fabric care guidelines before machine washing or dry cleaning.



Video Guides:

If you prefer us showing you how this installation is done in motion, head to our website where you can view our video tutorials:

WWW.WONDERLUX.COM.AU/GUIDES